

Indexing cranked handles

SPECIFICATION

Bores

- Bore **B**: without keyway
- Bore **K**: with keyway

Body

Cast iron (GGG)

- deburred and shot-blasted
- hub machined

Handle

Steel, blackened

Indexing pin

Steel, hardened



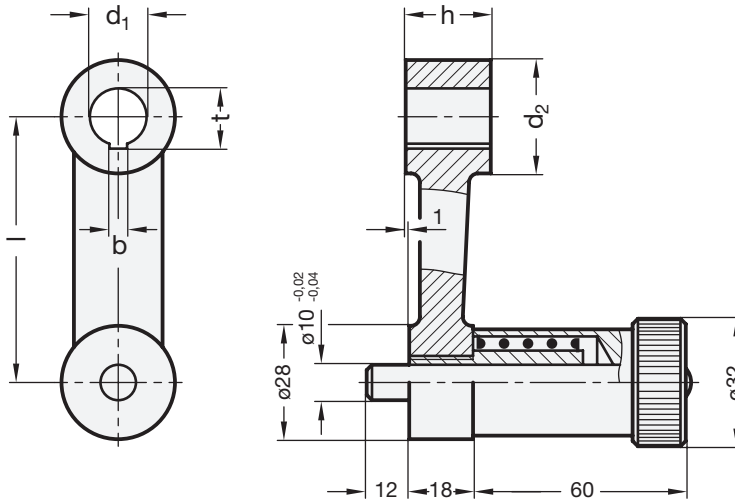
INFORMATION

Indexing cranked handles GN 558 are for positioning mechanisms. Standard machine elements for positioning of spindles:

- Indexing mechanisms GN 200 (see page 622)
- Indexing levers GN 215 (see page 634)
- Adjustable knobs GN 700 (see page 624)

TECHNICAL INFORMATION

- ISO-Fundamental Tolerances (see page A21)
- Keyway P9 DIN 6885 (see page A16)



GN 558

| Description | l | d1 H7 | d2 | h | bp9 | t | ⚖ |
|----------------|-----|-------|----|----|-----|------|-----|
| GN 558-75-B16 | 75 | B 16 | 32 | 24 | - | - | 544 |
| GN 558-75-K16 | 75 | K 16 | 32 | 24 | 5 | 17.3 | 540 |
| GN 558-90-B18 | 90 | B 18 | 34 | 26 | - | - | 588 |
| GN 558-90-K18 | 90 | K 18 | 34 | 26 | 6 | 19.7 | 583 |
| GN 558-110-B20 | 110 | B 20 | 36 | 30 | - | - | 684 |
| GN 558-110-K20 | 110 | K 20 | 36 | 30 | 6 | 21.7 | 680 |
| GN 558-135-B22 | 135 | B 22 | 42 | 32 | - | - | 823 |
| GN 558-135-K22 | 135 | K 22 | 42 | 32 | 6 | 23.7 | 818 |
| GN 558-165-B24 | 165 | B 24 | 44 | 36 | - | - | 994 |
| GN 558-165-K24 | 165 | K 24 | 44 | 36 | 8 | 25.7 | 988 |